

(Right)
Israela Hargil:
sculpture combining local stones
(Municipal Gallery, Netanya)

By Angela Levine

THE NAME of Israela Hargil (a graduate of the Academy of Fine Arts, Chicago) is associated with a number of unconventional environmental pieces, like the one set up in the grounds of Herzliya Museum in 1989, inspired by the building habits of termites on the African plains. Echoes of this work with its soft biomorphic forms confined by iron barriers can be found in a cameo selection of her recent small sculptures comprising slabs of different stones supported by vertical metal rods and blocks of wood.

Like many other sculptors, Hargil is purely concerned with playing with shapes, textures and surfaces, but she does this economically and well. There is close correlation between the sculptures and the objects in nature which provided her with inspiration: majestic Sinai rocks, roughly furrowed Galilee stone and smooth wad pebbles. The pale colors, tortuous veining cracked and pitted surfaces of these pieces seem to allude to centuries of harsh weathering. As in the Herzliya environment piece one senses that she has made an intensive study of her source material, not only observing it, but running her hand over every surface and cranny. (Municipal Gallery, Netanya.) Till October 30.

THE NAME of Israela Hargil (a graduate of the Academy of Fine Arts, Chicago) is associated with a number of unconventional environmental pieces, like the one set up in the grounds of Herzliya Museum in 1989, inspired by the building habits of termites on the African plains. Echoes of this work with its soft biomorphic forms confined by iron barriers can be found in a cameo selection of her recent small sculptures comprising slabs of different stones supported by vertical metal rods and blocks of wood.

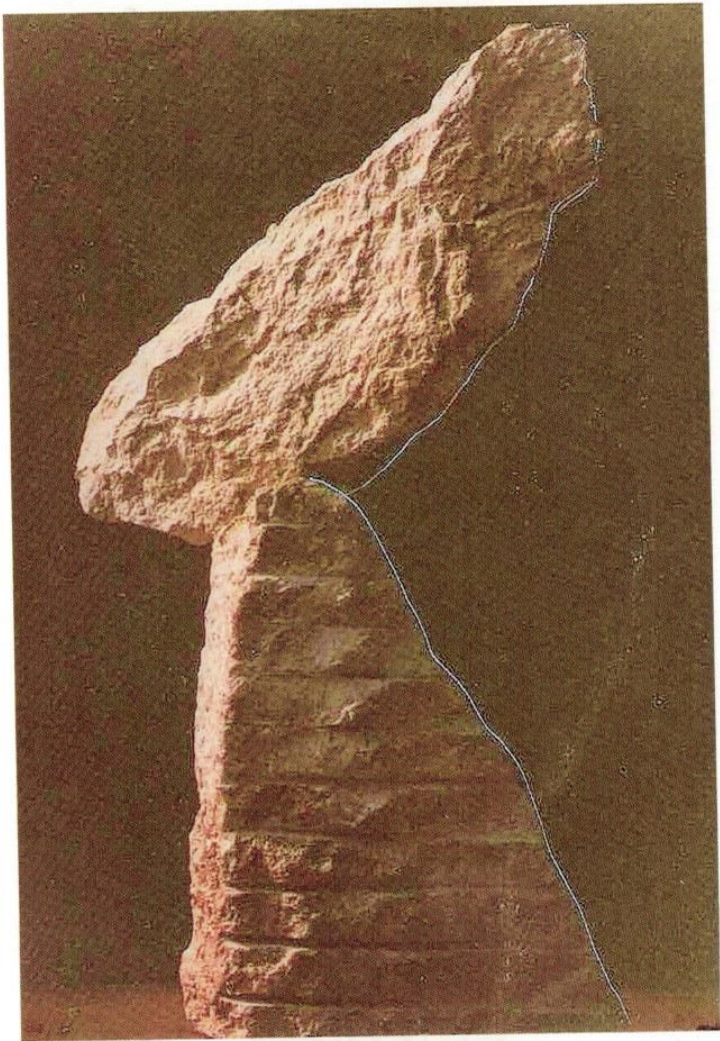
Like many other sculptors, Hargil is purely concerned with playing with shapes, textures and surfaces, but she does this economically and well. There is close correlation between the sculptures and the objects in nature which provided her with inspiration: majestic Sinai rocks, roughly furrowed Galilee stone and smooth wadi pebbles. The pale colors, tortuous veining, cracked and pitted surfaces of these pieces seem to allude to centuries of harsh weathering. As in the Herzliya environment piece, one senses that she has made an intensive study of her source material, not only observing it, but running her hand over every surface and cranny. (Municipal Gallery, Netanya.) Till October 30.

Israela Hargil:
 sculpture combining local stones
 (Municipal Gallery, Netanya)

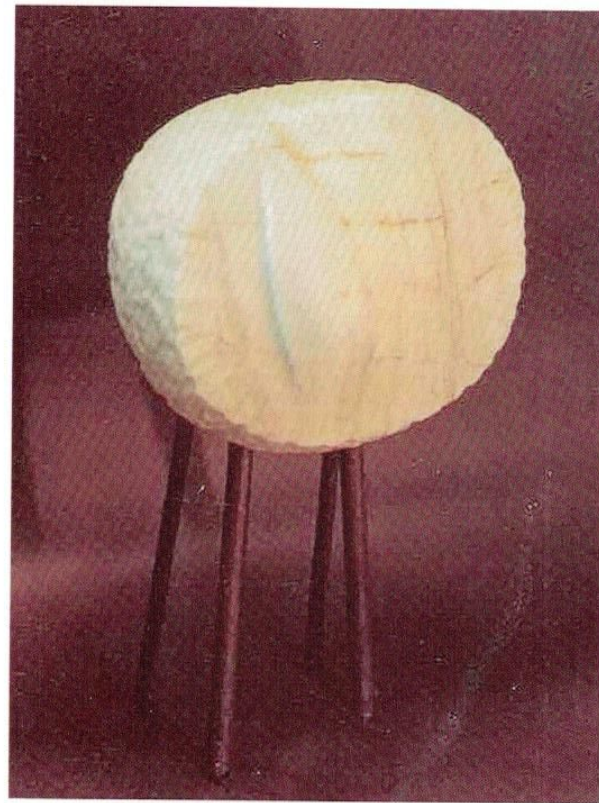
By Angela Levine

October 18, 1991

THE JERUSALEM
POST



UPWORDS
LOCAL STONE



BRAINY FIGURE
ITALIAN MARBLE &
IRON RODS

